



OWL BOX PROGRAM

In effort to protect local wildlife and cut down on the rodent population Portneuf SWCD's Owl Box Program offers barn owl boxes reasonable cost per box. Each box comes with mounting hardware and maintenance instructions.

BARN OWL 101

- Barn Owls offer an effective form of natural pest control that often provides better results than conventional trapping of poisons.
- The use of Barn Owls for pest control is eco-friendly, and requires little to no maintenance. The Army Corps of Engineers estimates that it takes 3,000 gophers a year, plus 2,000 mice, voles and birds, to sustain a pair of owls and their young.
- They hunt and store food for future feedings, and the males may use their surplus of food to impress potential mates.
- Barn Owl habitat is generally open fields and meadows. Why is this?The Owl's diet consists primarily of Pocket Gophers, Voles (or Meadow Mice), Deer Mine, and House Mice which live and reproduce in such habitat. This is where the Barn Owl's prey feeds on grasses, tubers, roots, sedges, forbs etc.
- Barn Owls have unique ways of communicating to one another. They utilize a complex variety of chirps, squawks, screeches, hisses and screams to communicate with their partner. The owl will modify their original sounds to express their current emotional state to their mate and offspring's.
- One of the most unique attributes about Barn Owls is their ability to make facial expressions. They have many tiny facial muscles that they manipulate to change the expression on their face. They use these facial expressions as part of their communication to their partner and babies.

Barn Owl Box Order Form

Clip this section and mail to: PSWCD at 214 E. Center St, Suite 10, Pocatello, ID 83201.

Name: _____

Address: _____

Phone: _____

Email: _____

Payment type: _____

*If please indicate if you prefer your invoice be sent by mail or email.

Owl Boxes are \$180 each.

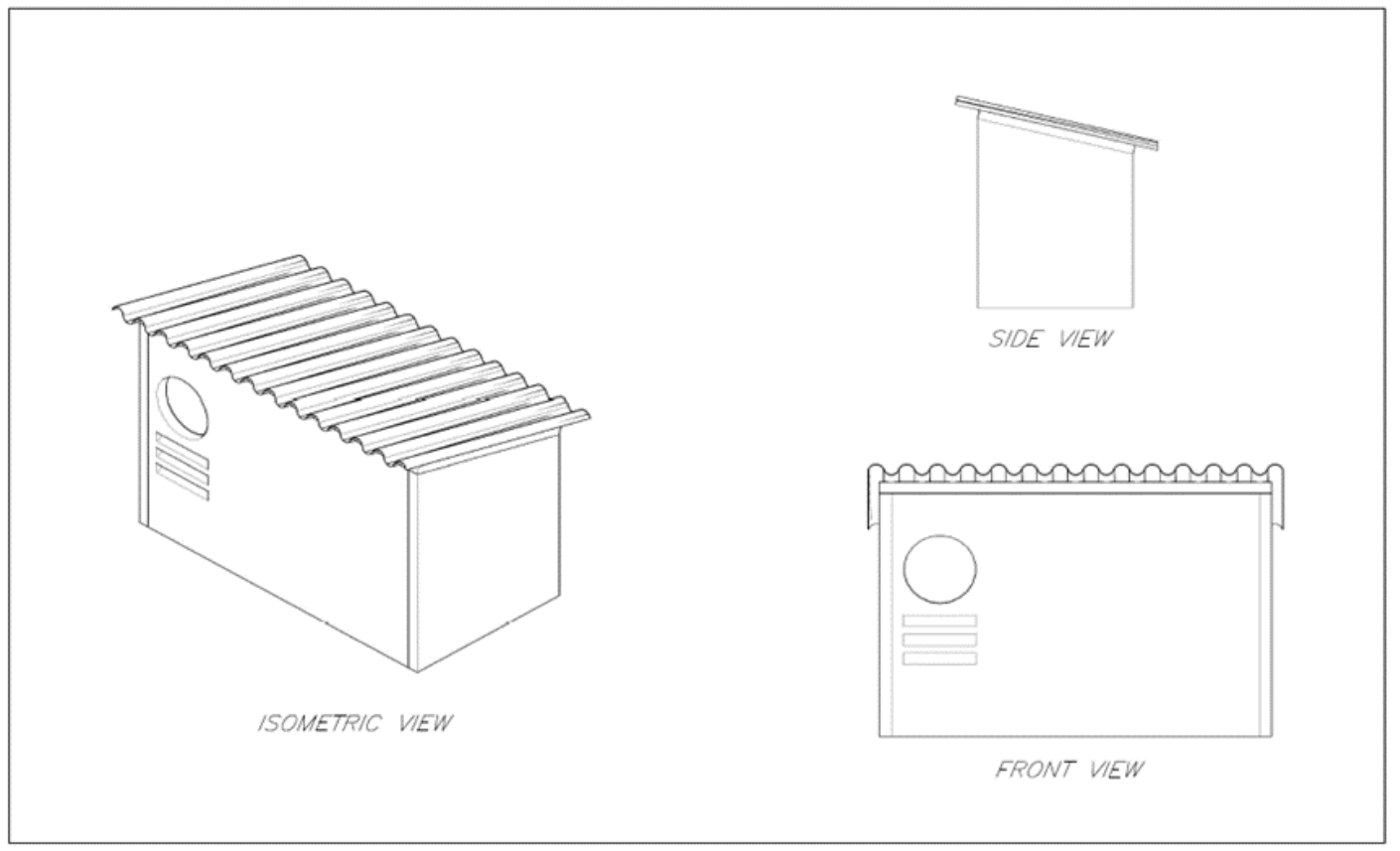
Quantity: _____

Total: _____

Each owl box is made by hand and may take approximately 2-6 weeks to complete.

You will be notified when your box is ready.

OWL BOX PROGRAM CONSTRUCTION



Barn Owl Boxes are mounted on a two ½-inch steel pole, and should be approximately 8 feet above the ground to prevent predators from entering which includes Great Horned Owls, raccoons and hawks. Boxes should be installed facing Northeast, which allows the least amount of light in and offers the best protection from the wind.



Contact us

PSWCD
214 E. Center St., Suite 10
Pocatello, ID 83201
(208)339-6023
portneufswcd@gmail.com
<https://portneufswcd.weebly.com/>