

PORTNEUF SOIL AND WATER CONSERVATION DISTRICT

Spring/Summer 2013

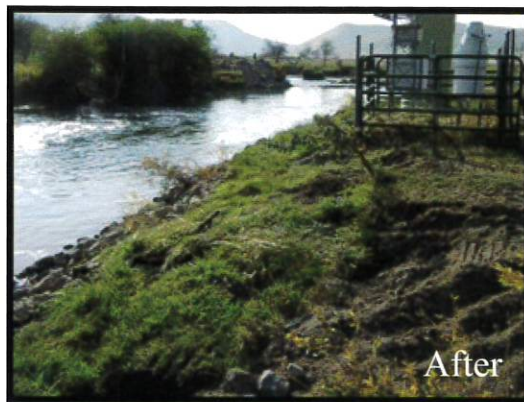
District Updates

The District is wrapping up the Marsh Creek Watershed Project Phase 3 grant. This was an IDEQ §319 grant to improve water quality in the Marsh Creek watershed by assisting land owners in the installation of Best Management Practices (BMPs) including improving animal feeding operations, riparian habitat improvements, stream bank protection, fencing, and off-site water. The final report will be available on the District website in the coming months. Thanks again to all those who helped make this project possible! The Marsh Creek Phase 3 grant is underway; if you would like information on this or any other project, please contact the District office.

The severely eroding banks of the Portneuf River endangered USGS and NOAA gauges (pictured top right in each photo). By rebuilding approx. 9ft of bank this project was able to save the gauges along with a tremendous amount of historical data.



Before



After

Inside This Issue

District Updates

Natural Resource Camp

CRP Info

FSA News

Environmental Fair

All Portneuf SWCD and NRCS programs are offered on a non-discriminatory basis without regard to race, color, national origin, religion, sex, age, marital status or handicap.

Portneuf SWCD is an equal opportunity employer

 Find us on Facebook

Board of Supervisors

Scott Henderson, Chair
Kevin Koester, Vice-Chair
Dave Jackson, Treasurer
John McNabb
Kit Tillotson

Associates

Morgan Evans
Brad Kent
Kirk Irick
John Sigler
Hannah Sanger

District Staff

Krystal Harmon
Office Administrator

NRCS Staff

BJ O'Doherty,
District Conservationist
Martha Nunez-Hagius
Engineer
Michelle Pak
Soil Conservationist
Matthew Bringhurst
Soil Conservation Technician

IASCD/ISWCC Staff

Chris Banks, Water Quality
Resource Conservationist
Steven Smith, Water Quality
Resource Conservationist

PSWCD Office:

1551 Baldy Ave., Ste. 2
Pocatello, ID 83201
208-237-4628 x111
portneufswcd@gmail.com

Idaho State University Intern

Valerie Evans came to us through a new partnership formed with Idaho State University. She was instrumental in implementing Portneuf SWCD's Information and Education program as well as being instrumental in forwarding our mission to expand community relationships. Valerie is currently writing her thesis and plans to graduate Spring 2013



Valerie Evans is a Master's of Public Health Student at Idaho State University. Part of her internship with PSWCD included conducting water quality sampling.

Partnerships

Portneuf Watershed Partnership

Portneuf SWCD has actively been a part of a local group called the Portneuf Watershed Partnership (PWP). Through the partnership we have been able to initiate and maintain an extensive watershed monitoring program. The group also meets monthly to discuss local areas of concern for the watershed. Local participants include: City of Pocatello and Chubbuck, Bannock County, US Forest Service, Shoshone-Bannock Tribes, Idaho State University, EPA, and Idaho Department of Environmental Quality.

Portneuf River Project

We have also been able to expand our partnerships through a local group called the Portneuf River Project. The PRP has been instrumental in bringing together resources for various projects including two of Portneuf SWCD's projects; Pebble Creek Project and a portion of the Marsh Creek Phase 3 project called the "Topaz Gauge Project".



PSWCD's Christopher Banks shows Franklin County's youth how to use water tubes to determine water quality during Franklin SWCD's 1st Annual Water Fair

Portneuf SWCD Updates continued...

Pebble Creek

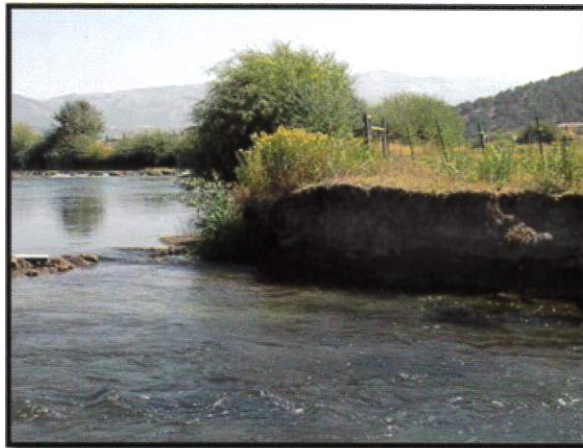


Aerial photos from 1941 served as the blueprint to restore this stretch of Pebble Creek to its former glory

By expanding partnerships to local agencies and special interest groups we have begun to reconstruct the original channel for Pebble Creek, a spawning stream for Yellowstone Cutthroat Trout and a large tributary to the Portneuf River a 303(d) listed stream. The stream had originally been straightened for agricultural purposes and by doing so had decreased diversity in the stream. Willows will be planted to provide bank stability and critical fish habitat and reduce the impacts of livestock grazing.

Topaz – Middle Portneuf

SWCD saw major improvements and a spike in land-owner interest after the implementation of the “Topaz Gauge Project”. The Topaz-Middle Portneuf River project will focus on severely eroding stream banks in the Topaz reach of the Portneuf River. The project area is located just west of the City Lava Hot Springs.



The middle stretch of the Portneuf has severely eroded banks. By planting willows and restricting access to livestock we hope to allow the

We will expand the area of the project to approximately two miles of the middle Portneuf River as well as install a large fish diversion on one of its tributaries, Dempsey Creek. The project will also focus on installing off-stream watering facilities for livestock. This will reduce the impacts of livestock on the stream bank and in critical riparian zones. Special care will be taken to try and reestablish vegetative cover in the Riparian zones and reduce the amount of bare bank that is currently visible throughout each of the project locations.

Natural Resources Camp Immerses Youth in Science and Scenic Sun Valley



KETCHUM, Idaho – The University of Idaho’s 2013 Natural Resources camp for youth 12-14 years old will offer something new: a look at Idaho’s volcanology.

Campers will learn about Craters of the Moon National Monument, Snake River Plain geology, volcanoes and other close to hand examples of Idaho’s fiery past. The addition expands the camp’s mission to help youths explore Idaho’s natural resources including wildlife, rangeland, forests, water and soil.

The June 24-29 camp near scenic Sun Valley is sponsored by University of Idaho Extension, Idaho Association of Soil Conservation Districts and the JR Simplot Co.

The campers will also repeat a popular feature added last year, immersing themselves in an example of an Idaho geothermal resource with a fieldtrip to Easley Hot Springs for some swimming and end-of-camp relaxation.

“It’s a little reward for the kids after spending a week with a lot of activities and learning,” said Amber Moore, camp director. She is a soil scientist for University of Idaho Extension at Kimberly.

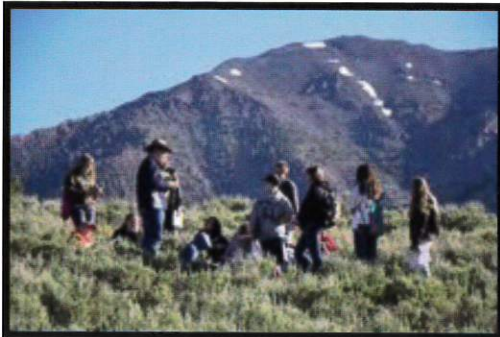
“We’re bringing in a lot more repeat campers,” Moore said. One reason is the cabin leader program that trains campers the first year to manage their cabins the next year.

Natural Resources Camp can provide up to 90 youths with an up-close-and-personal look at Idaho and science that has many campers coming back for more. About half of the campers do return and some practice future leadership skills by serving as cabin leaders.



Other campers developed interests in natural resources that led them to careers, too. “It’s wonderful to hear what the kids talk about and how excited they are when they get back,” Frances Perkes, Butte SCD’s Administrative Assistant said, adding many who go to camp want to go back the next year.

Natural Resources Camp Continued...



Applications for the 2013 camp are available through University of Idaho Extension and through Soil Conservation District offices across the state. Information is available at:

<http://www.extension.uidaho.edu/nrc>.

Registration is \$235 by May 21 and \$255 after that. Scholarship information is available by calling Portneuf Soil and Water Conservation District office. More information is available by contacting MeganSatterwhite, camp coordinator, at (208) 736-3634 or msatterwhite@uidaho.edu.

Other agencies that cooperate in running the camp include USDA Natural Resources Conservation Service, Idaho Department of Fish and Game, Idaho Department of Lands, U.S. Fish and Wildlife Service, U.S. Bureau of Land Management and USDA Forest Service.



Please contact the office at 237 -4628, x 111 or at portneufswcd@gmail.com if you are an educator or are a student between ages 12-14 . We have scholarships available to attend. Hurry because space is limited!

Internship or volunteer opportunities!

Do you have
experience working
with Publisher?

Would you like some
real-world job
experience?



If you are interested in
learning about
conservation please
contact the district
office for information
about becoming an
intern.

Portneufswcd@gmail.com
(208)237-4628 X111

CALENDAR OF EVENTS

Portneuf SWCD Board Meetings are normally held the second Wednesday of every month at 7 pm, Pocatello NRCS Office.

Call for location and time as changes do sometimes occur

Next board meeting
Wednesday, April 10,
7 pm, Pocatello NRCS
office

Portneuf Valley Environmental Fair

**PORTNEUF VALLEY
ENVIRONMENTAL FAIR**

APRIL 20, 2013

11 a.m. - 3 p.m.

Optimist Park, Pocatello

It's Easy Being Green in the Portneuf Valley



Stop by the 2013 Portneuf Valley Environmental Fair and learn about the small steps you can take at home, work, school, and on the road to improve our local environment.

Close to 100 businesses, agencies and organizations will be providing activities, information and goods for sale that make it easy to be green. Come out and enjoy great music, food and hands on activities at this popular community festival.

The Fair is FREE and has something for everyone - just ask one of the over 5,000 attendees from last year. Bring your friends and family and enjoy dozens of hands-on activities, pick up green goodies, listen to great live music and enjoy a free Idaho baked potato, hot dog or freeze dried ice cream. This community event is sponsored by local businesses, organizations, and local government agencies.

Portneuf Valley Environmental Fair

Saturday, April 20, 2013

11 a.m. - 3 p.m.

Optimist Park, Pocatello (by City Hall)

For more information see <http://www.envirofair.org/>

Please contact the office at 237 -4628, x 111 or at portneufswcd@gmail.com if you do not wish to receive this newsletter or if you would like to receive it electronically....

Thank you!

FARM SERVICE AGENCY NEWS

Farm Service Agency Announces Important Program Updates

The U.S. Department of Agriculture's Farm Service Agency (FSA) reminds producers that the American Taxpayer Relief Act of 2012 extended the authorization of the Food, Conservation, and Energy Act of 2008 (the 2008 Farm Bill) for many Commodity Credit Corporation (CCC) commodity, disaster, and conservation programs through 2013. FSA administers these programs.

The extended programs include, among others: the Direct and Counter-Cyclical Payment Program (DCP), the Average Crop Revenue Election Program (ACRE), and the Milk Income Loss Contract Program (MILC). FSA is preparing the following actions:

FSA will begin sign-ups for DCP and ACRE for the 2013 crops on Feb. 19, 2013. The DCP sign-up period will end on **Aug. 2, 2013**; the ACRE sign-up period will end on **June 3, 2013**.

The 2013 DCP and ACRE program provisions are unchanged from 2012, except that all eligible participants in 2013 may choose to enroll in either DCP or ACRE for the 2013 crop year. This means that eligible producers who were enrolled in ACRE in 2012 may elect to enroll in DCP in 2013 or may re-enroll in ACRE in 2013 (and vice versa).

All dairy producers' MILC contracts are automatically extended to Sept. 30, 2013. Eligible producers therefore do not need to re-enroll in MILC. Specific details regarding certain modifications to MILC will be released soon.

FSA will provide producers with information on program requirements, updates and signups as the information becomes available. **Please contact the office to set up an appointment to sign up for DCP or ACRE.** The Banock County FSA office can be reached at 208-237-3435 ext. 2.

*Information taken from USDA News Release 0023.13

FSA Dates to Remember:



- CRP Sign-Up 45 – May 20 – June 14, 2013
- ACRE Signup Deadline – June 3, 2013
- DCP Signup Deadline – August 2, 2013
- Crop Reporting Deadline – July 15, 2013
- NAP 2012 Production Deadline – July 15, 2013
- ACRE 2012 Production Evidence Deadline – July 15, 2013

CLIP Your CRP Get it Established!

Throughout southeastern Idaho we have had several CRP and SAFE signups in the past few years. CRP has evolved over the years from an erosion control program and is now shifting to a wildlife oriented program to help improve wildlife habitat. So now what? You are reenrolled and have to replant parts of your property or have replanted already. If you are like most people, you are worrying about your field, thinking that you are going to have a weed epidemic. You need to be proactive with your stand to give it the best chance of getting established. With the new wildlife element in the CRP and SAFE programs, we are planting forbs that can't be sprayed with our normal chemical herbicides used to control the noxious weeds as well as the annuals that are coming up. FSA has a practice that will be cost shared up to \$15 per acre called CLIPPING.

This practice must be requested at your local FSA office before you begin. Clipping is successful when you pay attention to the field and the life cycle of the plants growing out there. You must watch and be ready for action when the weed flower is getting ready to bloom (seed set). At this point you clip by taking your rotary mower or swather out and clip the entire stand at a minimum of 8-10 inches. The end goal is all the seed heads from the undesirable weeds are removed. Normally this is done in the month of June, but it all depends on the

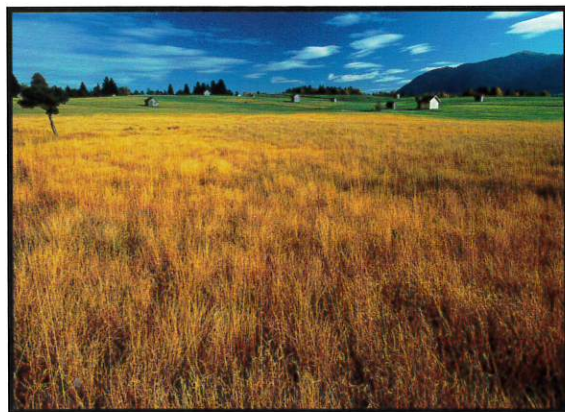
moisture and the weeds growth that spring. Once the clipping has been completed, turn your bill into FSA to receive payment. We strongly encourage landowners pay close attention to their stand because if you clip on time the chances of stand establishment increases greatly.

“Clipping is successful when you pay attention to the field and the life cycle of the plants”

If you have questions contact NRCS or a Pheasants Forever biologist in your local service center for recommendations, sooner is better than later when it comes to weeds. Your stand's success is solely your responsibility, so get out there and CLIP it.

For more information call FSA office at:

(208)237-4628 X 100



CLIP IT!


Reminder for current CRP participants about upcoming management practices for the current year

The Bannock County Farm Service Agency (FSA) would like to remind producers of their responsibility to control weeds in their CRP stand as well as exclude livestock and motor vehicles to protect, maintain or improve the quantity and quality of the plant and wildlife resources. Noxious weeds are to be controlled outside of the nesting season (April 1- August 1), but spot treatment during the nesting season in consultation with NRCS and approved by the COC is recommended. Chemical applications need to be in accordance with State and Federal regulations. Bannock County Weed Supervisor, Aaron Greenwell, is a good contact when trying to identify and control any type of infestation. He can be contacted at 208-234-4139. Any violations can result in a penalty, if good faith to follow the conservation plan can be proven. If good faith cannot be proven, then the County Committee will terminate the contract and collect back all monies plus interest paid to CRP participants.

Excluding livestock and motor vehicles can be a problem for CRP participants. It is the responsibility of the CRP participant to keep livestock from grazing CRP acres. This means that a good fence needs to be present to prevent access from livestock. This is the most common CRP violation. The Bannock County office checks 15% of CRP acres each year for compliance. Any violations can result in a penalty, if good faith to follow the conservation plan can be proven. If good faith cannot be proven, then the County Committee will terminate the contract and collect back all monies plus interest paid to CRP participants.




**The Voice of Agriculture
in Bannock County**




**Bannock County
Farm Bureau®**
Call 233-9442

Proud Sponsor of PSWCD

D. L. Evans Bank
"Idaho's Hometown Community Bank Since 1904"



www.dlevans.com 

4080 Yellowstone Ave. Pocatello 637-2265

Non-Profit Org
U.S. Postage
PAID
Permit No. 51
Pocatello, ID

**Portneuf Soil and Water
Conservation District**
1511 Baldy Ave., Ste. 2
Pocatello, ID 83201
208-237-4628